

FLOOR FRAME LAYOUT

Trusstech SA Pty Ltd

ABN: 40 1 3 18 22 140 16 High Street Dry Creek SA 5094 Ph: 08 8260 6006



OAKRIDGE
BUILDING SERVICES

Ph : 83637222
Fax : 83637225

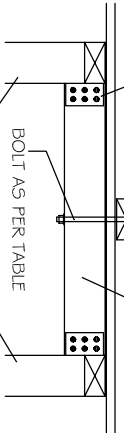
FLOOR TRUSSES: 5J-400 @ 600 CTRS GENERALLY UNO
WET AREA JOISTS: 5J-355 @ 600 CTRS GENERALLY UNO
BALCONY JOISTS: 5J-310 @ 600 CTRS GENERALLY UNO
FLOORING: 22mm PARTICLE BOARD
18mm COMPRESSED SHEET TO W/A & BALCONY
LEDGER PLATE: 120x35 MGP10 TO ENDS
150x150x10 EA @ 300mm LONG
WITH 2 M16 BOLTS & 40mm
SQUARE WASHER TO EACH SIDE

ALL MATERIALS ALLOWED AS PER AS 1684.2-2010
TRUSSES & BRACING TO BE INSTALLED, ERECTED
& BRACED IN ACCORDANCE WITH AS4440-2004
NOTE: TRUSSES & JOISTS TO BE POSITIONED
DIRECTLY OVER STUDS
UNLESS SHOWN OTHERWISE ON LAYOUT, NO
SPECIAL LOADS HAVE BEEN ALLOWED.
EG - SPA BATHS, HOT WATER SYSTEMS ETC.

WET AREA DETAILS
THE WET AREA SHEET FLOORING MUST BE LAID IN
STRICT ACCORDANCE WITH THE RECOMMENDATIONS
BY JAMES HARDIE. REFER TO THE BATHROOM
COMPRESSED SHEET DETAILS.
* ALLOW WALL PLATE/TIMBER INFILL FOR FLOOR TRUSS
CONNECTIONS TO STEEL BEAMS
* FLOOR TRUSSES fixed to bearers using
STRUT HANGER 180x180x90 throughout
X = INTERNAL SUPPORT / CANTILEVER POINT

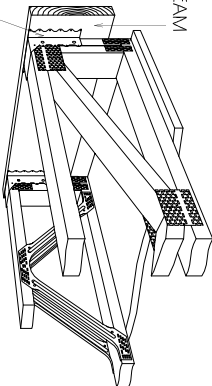
BOTTOM PLATE FIXING DETAILS

2 NAILING PLATES EACH
END OF BRIDGING, LEGS
NOT BENT, WITH 6/2.0mm
NAILS TO EACH FACE



M10 BOLT - 12 kN M12 BOLT - 15 kN

STRUT HANGER 180x180x90 SUPPORTING
NORMAL FLOOR LOADS - FIXING DETAIL



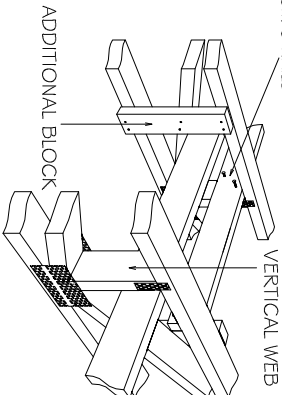
MIN 4/30x2.0mm NAILS REFER TO TABLE BELOW

NO. OF NAILS PER WING	FLOOR TRUSSES SPAN (mm)	
4 NAILS	450 CTS	600 CTS
6 NAILS	2500	2000
8 NAILS	3900	3100
10 NAILS	5000	4000
12 NAILS	6400	5100
	7700	6200

STRONGBACK

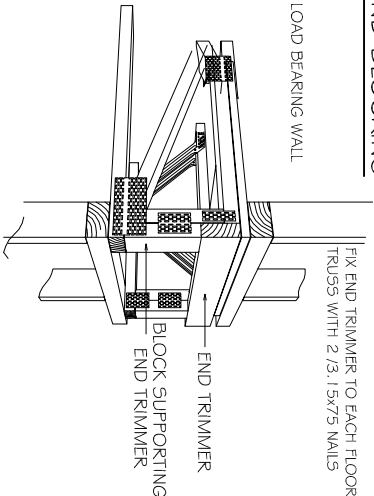
NON-ALIGNED STRONGBACKS
MAXIMUM 2m CTS
600mm MAX APART

2 / 3.15x75 NAILS

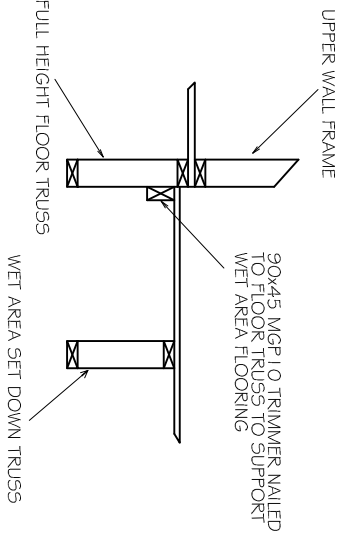


END BLOCKING

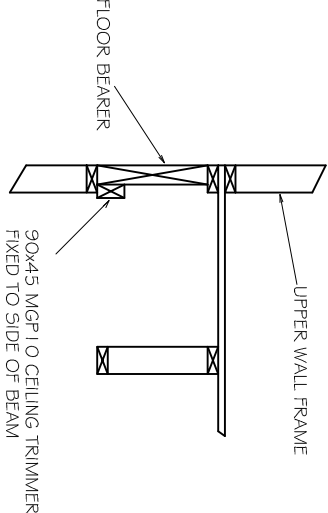
FIX END TRIMMER TO EACH FLOOR
TRUSS WITH 2 / 3.15x75 NAILS



WET AREA SET DOWN LEDGER DETAIL



FLOOR BEARER CEILING TRIMMER DETAIL



DWELLING 1

S:\OAKRIDGE TAKEOFFS\D\ANDREA\541 ANZAC HWY\D1\D1 541 ANZAC.dwg

SPECIFICATIONS:		Joist Type:	SpanJoist	Spacing:	600
Structure:	House	Flooring:	Particle	Dist. Live Load:	1.50
Floor Appl:	General Areas	Flooring Size:	3600x900x22	Concat. Pont Load:	1.80
Wind Speed:	NI	Ceiling:	Plaster Omni Supa Span	Timber:	Dry Swd (can include KD Hwd) HO

Customer: D'ANDREA Site Address: 541 ANZAC HWY, GLENELG EAST	
Detailer: Matt Opie	Signed:

SHEET 2/5	
Date:	25/05/2018
Scale:	1 : 100
Job No:	TT09727